



## **Vivotek** **IP Surveillance System**

# **Network Camera** **IP2111/2121**

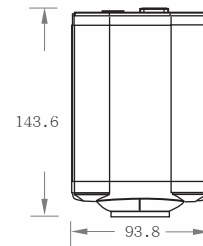
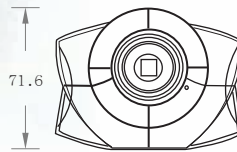
The network camera IP2111/21 combines powerful video server and high quality image sensor for easy migration to digital video surveillance and monitoring. Either Ethernet or modem can be used to transmit live video anywhere you want. Real time performance and high quality video are enjoyed at your finger without any compromise. With external device support and motion detection, Vivotek network cameras can easily build the optimal security applications.

### **Features**

- Easy web access via popular browsers
- Familiar wizard assistance
- Built-in CCD and extension for auto iris lens
- Real-time performance with options of size and quality
- Built-in motion detection
- WAN support via external modem
- Remote PT scanner control
- Extension for sensor and alarm
- Development kit for system integrators

# Technical Specifications

## IP2111/2121



### Model

- IP2111 NTSC CCD
- IP2121 PAL CCD

### System

- CPU: Trimedia PN1300
- RAM: 16MB SDRAM
- ROM: 2MB FLASH ROM

### Networking

- Protocol  
TCP/IP, HTTP, SMTP, FTP, Telnet, NTP, DNS and DHCP
- Modem  
PPP(dial-up, direct cable connection)
- Ethernet  
10 baseT or 100 baseT Fast Ethernet auto negotiation

### Video

- Algorithm supported  
MJPEG
- Features  
Adjustable image size and quality  
B/W or color control  
Time stamp and text overlay
- Resolution  
**NTSC**  
Up to 30 frames at 176x112  
Up to 30 frames at 352x240  
Up to 9 frames at 704x480  
**PAL**  
Up to 25 frames at 176x144  
Up to 25 frames at 352x288  
Up to 8 frames at 704x576

### Camera Specification

- 1/3 inch color CCD image sensor
- 1 Lux / F2.0
- AGC, AWB, AES
- IP2111  
Resolution: 512(H)x492(V)  
Electronic shutter: 1/60~1/100,000sec.
- IP2121  
Resolution: 512(H)x582(V)  
Electronic shutter: 1/50~1/100,000sec.

### Lens

- Standard CS-mount type, 6.0mm, F1.8

### Serial Port

- 9 pin D-SUB RS232 or RS485  
(PTZ camera control or modem)  
max.115.2kbps

### General I/O

- 1 sensor input max.12VDC 50mA
- 1 relay output max. 24VDC 1A / 125VAC 0.5A

### LED Indicators

- Network indicator
- Heartbeat indicator
- Status indicator

### Dimension

- Length: 143.6mm
- Width: 93.8mm
- Height: 71.6mm

### Weight

- NET . 700g

### Power

- Consumption: near 5.4W
- Input: 100-240VAC, 50/60Hz, 0.4A
- Output: 12VDC, 1.5A

### Operating Environment

- Temperature: 0~50°C(32~122°F)
- Humidity: 95% RH

### EMI & Safety

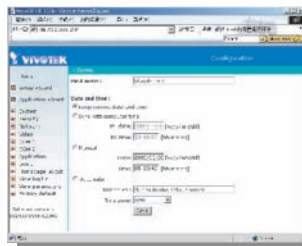
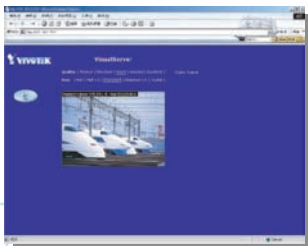
- CE, FCC

### Viewing System Requirement

- Internet Explorer 4.x or above;  
Netscape Navigator 4.x or above

### Free Bundled ST2202 Software

- Remote configuration and control
- Event-triggered, scheduled, manual recording
- Instant search with preview windows
- Fast/slow forward replay and pause
- Hard disk quota warning
- Scheduled backup
- AVI format export



All specifications are subject to change without notice.  
All other trademarks are owned by their respective companies.



VIVOTEK INC.  
6F., No.192, Lien-Cheng Rd.,  
Chung-Ho, Taipei County, Taiwan  
Tel: +886 2 82455282  
E-mail: sales@vivotek.com  
Web: www.vivotek.com

